

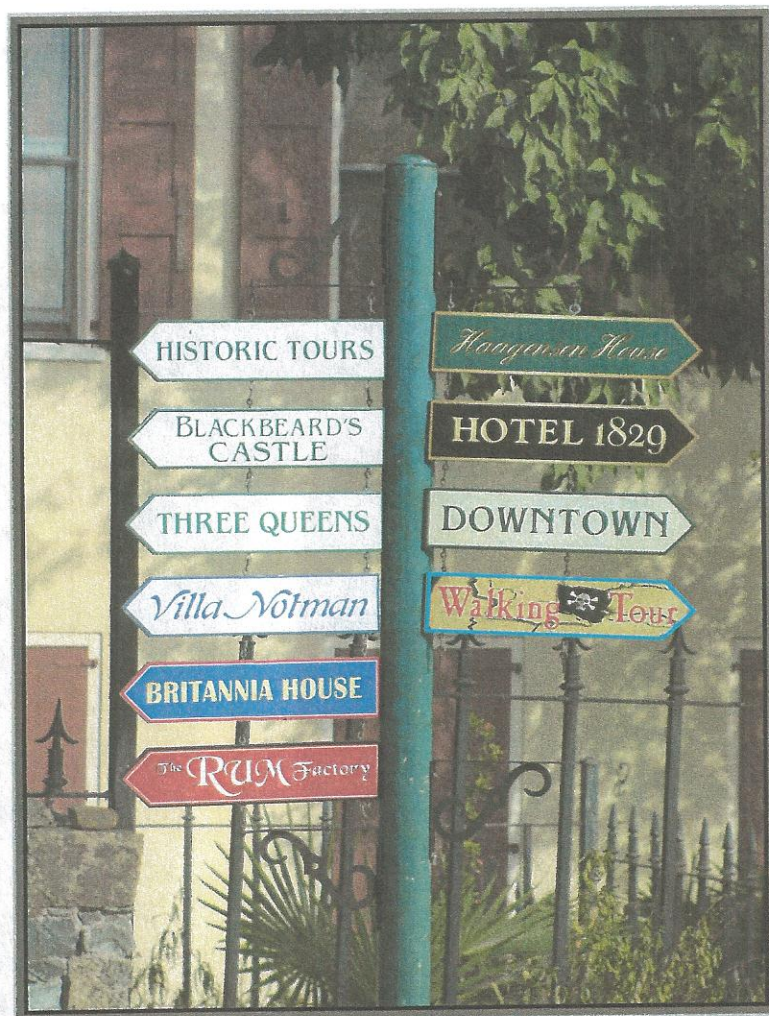
**ST. THOMAS HISTORICAL TRUST, INC.
ANNUAL REPORT 2012**



Window inside Ft. Christian

MISSION STATEMENT

To identify, protect and preserve the historical identity, structures and sites, and cultural heritage of St. Thomas through education, advocacy and promotion



Physical Address: 14B Norre Gade, St. Thomas, VI
Mailing Address: P.O. Box 6707, St. Thomas, VI 00804
Telephone: (340) 774-5541
Email: execdirector@stthomashistoricaltrust.org
Website: www.stthomashistoricaltrust.org

S.T.H.T. ANNUAL REPORT

TABLE OF CONTENTS	PAGES
❖ PRESIDENT'S MESSAGE	4
❖ ANNUAL MEMBERSHIP MEETING AGENDA	5
❖ EXECUTIVE COMMITTEE	6
❖ BOARD OF DIRECTORS	7
❖ PROPOSED NEW DIRECTORS	9
❖ STHT ORGANIZATIONAL CHART	11
❖ COMMITTEE REPORTS:	
○ TREASURER	12
○ FUNDRAISING	13
○ MEMBERSHIP	14
○ MISSION DEVELOPMENT	14
❖ TASK FORCE REPORTS:	
○ HASSEL ISLAND INITIATIVE	15
○ STEP STREETS	17
○ FT. CHRISTIAN	19
❖ THANK YOU TO OUR DONORS AND VOLUNTEERS	20
❖ FINANCIAL STATEMENTS (ADDENDA):	
○ BALANCE SHEET AS OF 30 SEPTEMBER 2012	
○ PROFIT & LOSS 2012 VS. BUDGET	
○ GENERAL FUND BUDGET 2013	
○ HASSEL ISLAND BUDGET 2013	
○ AUDITED FINANCIAL STATEMENTS 2011	



PRESIDENT'S MESSAGE

Dear Fellow Trusters:

I once again welcome you to our annual meeting and certainly hope we have all been doing what has been expected of us. Reports of our projects are in the following pages.

Charles Consolvo, together with his Hassel Island task force has been making leaps and bounds to help obtain our goal to have trails and Hassel Island ready for tours. We do have a cadre of tours guides doing some tours already, but there will be more soon.

The Step Streets Task Force's leadership is now in the hands of Felipe Ayala who has taken on the project. He promises good results. We received a grant from the State Historic Preservation Office to assist with repairs, which are underway.

Ft. Christian – We are close to signing a Memorandum of Agreement with the Department of Natural Resources for work on Hassel Island and Ft. Christian as well. Shane Brunt is now chair of this task force.

Our lecture series and tours continue and some new and interesting ones are on the way.

Vice President Bernice Turnbull once again is keeping the doors of our museum/store/office open, and more is in store for the store! She still needs volunteers!

Our Executive Director - Pamela Montegut (*yes, she got married*) has been working hard at the Trust and is doing a phenomenal job!

Our Secretary Lisa Chamely-Aqui will be stepping down this year. We will miss her, as hers will be grand shoes to fill.

I truly believe the St Thomas Historical Trust is living up to our mission statement and will continue to do so.

Thank you for allowing me another great year as your President!

Ronnie Lockhart

ANNUAL MEMBERSHIP MEETING

THURSDAY 11TH OCTOBER 2012, WINDWARD PASSAGE HOTEL

AGENDA



- 6:00p.m. Call to Order & Introduction of Feature Speaker:
R. Lockhart**
- 6:05p.m. Feature Video followed by Q&A: Camilla Jensen**
- 7:15p.m. President's Message: R. Lockhart**
- 7:20p.m. Presentation of Awards: Charles Consolvo**
- 7:25p.m. Committee Reports**
- 7:35p.m. Voting & Ballot Counting —**
- 7:40p.m. Concluding Remarks: R. Lockhart**
- 7:45p.m. Membership meeting recesses**
(Board of Directors convene an organizational meeting to elect officers, designate committee and task force chairs, and to ratify the approved budget)
- 8:00p.m. Adjournment**

2010-2012 EXECUTIVE COMMITTEE

President: Ronald S. Lockhart

Ronnie is the owner/proprietor of The Crystal Palace B & B and Herbie's Big Top. He has served in many Board capacities for St. Thomas community organizations, including President of the Rotary Club of St. John (1998-2000), Director, Council on Alcoholism and Drug Dependence, St. Thomas, St. Thomas-St. John Friends of Denmark, and the Virgin Islands Hotel & Tourism Association. He earned his B.B.A. from Ft. Lauderdale University (1974). He enjoys collecting and exhibiting Danish West Indies and Virgin Islands antique postcards and professional photography.

Vice President: Bernice Turnbull

Bernice is a native U.S. Virgin Islander who earned her BA in Business Administration and MBA from UVI. Her distinguished career with the Department of Finance spanned from 1964 to 2006, culminating in the position of Commissioner of Finance under the Gov. Charles W. Turnbull Administration. She has been active on many Boards, including but not limited to Joint Boards of the Gov. Juan F. Luis Hospital and the Roy L. Schneider Hospital, the Public Finance Authority, and the Trust, where she Chairs the Nominations, Volunteer and Museum Committees. She is a married mother of two adult children and a member of the Wesley Methodist Church.

Treasurer: Frank McConnell

Frank was born and brought up in Puerto Rico and graduated from Yale and Columbia Business School. He worked for Citibank for 30 years, mostly overseas, before retiring to St. Thomas in 1997 with his wife Peggy. They moved into their historic house in Estate Canaan, which his family had purchased in 1955. He and Peggy have been active in the Trust activities since 1999.

Secretary: Lisa Chamely-Aqui

Lisa is an Executive Coach and Communications Specialist. She holds a M.Sc. in Organizational Leadership with a Concentration in Professional and Executive Coaching from the University of Texas at Dallas, and a B.A. Hon. from the University of Western Ontario, Canada. Lisa moved to the USVI in 2006 from Trinidad. In addition to the Trust, Lisa is actively involved in the music ministry at St. Anne's Chapel, Frenchtown, and in fund-raising and Carnival production for her daughter's school, the Virgin Islands Montessori School and Peter Gruber International Academy.

2010-2012 BOARD OF DIRECTORS

Felipe Ayala, Jr.

Felipe is the owner of Designed by Felipe. He has served for 20 years on the STHT Board of Directors, from 1991. He has also been Chairman of the Historic Preservation for the past 9 years. Felipe co-hosted the popular historic preservation TV 2 program "Inside". He served as President of the Hibiscus Society and Project Manager for the Scrape, Paint and Rejuvenate Program for the Charlotte Amalie Historic District. He wrote the Trust's booklet: "the Self-Guided Walking Tour of Charlotte Amalie Historic District Kongens Gade"; is an avid gardener and West Indian antiques collector.

Filippo Cassinelli

Filippo Cassinelli is an owner of A.H. Riise, and Isidor Paiewonsky Associates, Inc. A.H. Riise is a privately held, family-owned business known for its commitment to excellence and quality. The company is the official Rolex Retailer in the USVI. Isidor Paiewonsky Associates, Inc. is a commercial real estate company that leases property in the historic district of St. Thomas, including the A. H. Riise Mall, one of its flag ship properties. Filippo graduated from Trinity Pawling prep school and New York University with a BA in English and an Associates Degree in Classics. He is a member of the St. Thomas - St. John Chamber of Commerce and served as a member of the Governor's Charlotte Amalie Cruise Ship Task Force. He currently serves on the board of the St. Thomas Historical Trust. He is actively raising money for the Trust to open the Hassel Island National Park. He also serves on the board of the Community Foundation.

Charles Consolvo

Charles began practicing law in St. Thomas in 1976, and then moved into retailing. He holds a Master's degree in Maritime History and has lectured extensively on the maritime history of St. Thomas. From 1978 to 2008 he was a trustee and general counsel of Island Resources Foundation. He holds a Master's Degree in Historical Archaeology from the University of Leicester. He is a member of a number of professional societies, including the Society for Historical Archaeology and the society for Nautical Research, and is a Registered Professional Archaeologist. He has restored two historic buildings in downtown Charlotte Amalie, has two sons born here, has participated actively as a Cub Scout leader and in the youth soccer program.

Steve Jones

Steve is the Assistant Commissioner of Property and Procurement. Before that he was with the Pharmed Group, Inc. and managed the Caribbean side of the business. He is a graduate of the Strayer college in Washington D.C. Under the Fundraising Committee, Steve chairs the License Plate Program for the STHT. Within the wider community, he also sits on the Board of Directors of Kidscope, represents the

Governor on the Waste Management Board, and is newly elected to the Sts. Peter and Paul Church Council.

Thomas K. Moore

Tom Moore was born in Idaho in 1938, attended high school in the Philippines, and graduated from Harvard College in 1961 with a commission in the Air Force. After serving 3 years, he attended Georgetown University Law School. Following his graduation in 1967, he worked at the Department of Transportation as a private attorney in Washington, DC and Virginia, and as an Asst. US Attorney in Alexandria, Virginia. From 1976 to 1978, he was an Asst. US Attorney on St. Thomas. Following this he worked in private practice on St. Thomas until he was sworn in as the Chief Judge of the District Court of the Virgin Islands on August 14, 1992. He served on the Court until his retirement in 2003. Most recently, he was elected and served as a Delegate to the Fifth Constitutional Convention of the Virgin Islands.

Frances Newbold

Frances brings great marketing experience to STHT. A graduate of Moore College of Art in Philadelphia, Pennsylvania, Frances has lived and worked in the Caribbean since 1977. She manages a staff of 12 plus - from production artists to writers and distribution personnel, and currently publishes four tourist magazines (St. Thomas This Week, St. Thomas Cruise Edition, St. Croix This Week and the Ultimate Luxury Guide), as well as tourist maps to 18 Caribbean islands and 11 Mexican destinations. As such, her association with STHT is a common interest, as her favorites in life include sailing, boating, Caribbean history, architecture, flora, fauna and travel.

Mike Sheen

Mike is the owner of Michael Sheen Fiberglass. He attended Chico State University in California. His volunteer activities include Past President of the V.I. Game Fishing Club; Member, Council on Alcoholism and Drug Dependency of St. Thomas Inc.; the St. Croix Landmark Society; and Friends of the St. Thomas Libraries. He is the Chair of the newest Facilities Committee at STHT. He is married to Jane Benjamin Sheen, and they have two children, Toby and Michaela. Michael and Jane are inveterate collectors of West Indian antiques and ephemera.

Ray Szymanski

Ray is Vice President and General Manager of Shell Seekers, Inc. and was previously the CFO at Antilles School (2008-2010), and Director of Finance and Administration with A.H. Riise and Isidor Paiewonsky Associates, Inc. (2001-2008). He has a Bachelor of Accountancy degree from Walsh College in Troy, MI and Associate Degrees in Accounting and Business Administration from Macomb Community College in Warren, MI. He is also currently on the Board of the Humane Society of St. Thomas, Havensight Mall Association, and Pinnacle Homeowners Association, and in the past served on the Board of United Way of St. Thomas-St. John.

DURING 2012, SHANE BRUNT AND KRISTY SOLT WERE ELECTED BOARD REPLACEMENTS TO ACCOMMODATE THE CASUAL VACANCIES LEFT BY TREVOR MILNE AND STEVE BORN.

PROPOSED NEW DIRECTORS - 2012 to 2014:

Joanne Bozzuto

Joanne Bozzuto is an attorney, CPA, former global Co-head of Goldman Sachs & Co. tax department, Director of Virgin Islands Bureau of Internal Revenue and Acting Commissioner of Finance. She is currently Court appointed Receiver of Lonesome Dove Petroleum Co., an oil and gas company with interests throughout central and western United States. In addition to serving previously as Vice President on the Board of St. Thomas Historical Trust, Ms. Bozzuto has served on several community Boards. These include but are not limited to: West Indian Company (1995-1998); Industrial Development Commission (1995-1997); Virgin Islands Windstorm & Earthquake Insurance Authority (1995-1996); United Way of St. Thomas/St. John (1995-1998); Member, UVI Revised Organic Act, 50th Anniversary Ad Hoc Committee; Member, UVI's Advisory Board Constitution (2008) and Foundation of the Reichhold Center of the Arts (2012).

Shane Brunt

Shane Brunt was born and raised on St. Thomas. He attended both VI Montessori School and Antilles High School, and graduated with a Bachelor of Arts from the University of Miami. Upon finishing college, Shane returned to work in his family business, MSI Building Supply. Shane is an owner of Heavy Materials, LLC, and has served on the St. Thomas/St. John American Red Cross Board, and volunteered at his children's school - Virgin Islands Montessori School and Peter Gruber International Academy. Shane is married to Tina Brunt and has 2 children.

PROPOSED NEW DIRECTORS – 2012 to 2014:

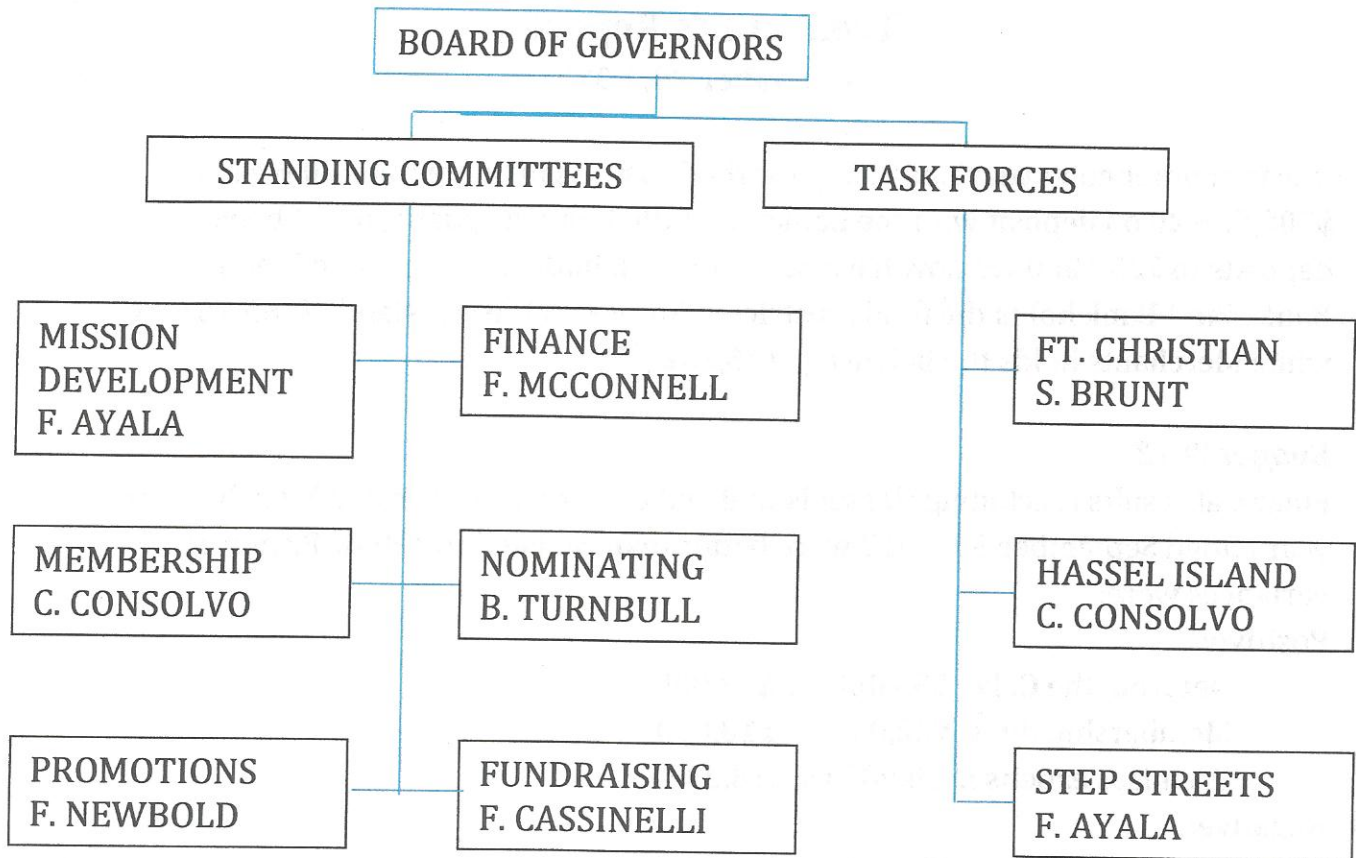
Kristy Solt

Kristy was born and raised in central Pennsylvania, where she attended Penn State University and graduated with honors with a Bachelor of Science degree in Marketing. She moved to Boston after college where she worked for AT&T Enterprise as a Field Service Manager, before moving on to Event Manager for Guinness. She moved to New York City with Guinness, where she launched the Guinness Believer program. Kristy then moved to St Thomas on a whim and has lived here for 8 years. Since moving, she's worked on charter boats, as the Brand Manager for Miller beer, Event and Marketing Manager for St Thomas Restaurant Group and currently as the Marketing Coordinator for Glacial Energy. She is also enrolled in school online, studying graphic design. She is an active board member for two other organizations, Dinner And A Cause and Charity Chicks.

Skip Williams

Skip Williams has had a long history with the US Virgin Islands. Following his mother's marriage to Art Andrew, he moved to St. Thomas year round, and graduated from Sts. Peter and Paul High School. He holds an M.A. in Marriage and Therapy from Hope International University, and a B.A. in Communications from Ohio Dominican College. He was commissioned in the Air Force in 1978. There he served as Personnel Commander. During his distinguished military career, Skip was assigned to countries in Latin America, Europe, Middle East and Asia. He retired honorably in 1995 at the rank of Major, and returned to St. Thomas to help rebuild after Hurricane Marilyn. Outside of the military, Skip has held numerous positions, primarily in Health, Safety, Security and Environment with companies such as Disney and Kinsbursky Brothers, Inc., in Anaheim, CA. Until 2009, he served as a marriage and family therapist for Crossroads Christian Church and Four Streams Christian Counseling. He entered semi-retirement in 2010 in St. Thomas, and has been an active community volunteer. Skip serves on the Board of COAST, is an Executive Board Member of the American Legion (Patrick U. George, Post #90, St Thomas), is a member of the Governor's Office of Veteran's Affairs, Veterans' Connect Outreach Services, the Humane Society and a Hassel Island Tour Guide.

ORGANIZATIONAL CHART – ST. THOMAS HISTORICAL TRUST



Board members at the 2011 Annual Meeting



L-R: Ronnie Lockhart, Steve Jones, Pamela Montegut, Felipe Ayala, Frannie Newbold,
Lisa Chamely-Aqui, Bernice Turnbull, Tom Moore, Filippo Cassinelli, Frank McConnell

St. Thomas Historical Trust

Treasurer's Report

September 30, 2012

It was another good year financially for the Trust. As of September 30 we had \$300,534.20 on deposit with the banks. As FDIC limits its guarantee of bank deposits to \$250,000 we now have accounts with both First Bank and Merchants Bank. First Bank holds the funds restricted for use on Hassel Island (\$165,151.43) while Merchants holds the balance (\$135,382.77).

Budget 2012

Financial results (excluding Hassel Island and the Step Street project) for the fiscal year ended September 30, 2012 were better than we had budgeted. Principal variances were:

Positive:

Net from the Gala: \$55,000 vs. \$33,000

Membership dues: \$22,000 vs. \$18,000

Premises expense: \$8,000 vs. \$18,000

Negative:

Professional fees: \$18,000 vs. \$10,000.

The projected premises expense included a provision of \$11,000 for a possible move to a new location. This, of course, did not happen.

Professional fees were much more than we had projected, primarily because of additional complications in our bookkeeping related to the Hassel Island projects.

Budget 2013

The budget for the fiscal year ending September 30, 2013 (excluding Hassel Is. and the Step Street project) indicates that we will cover our expenses, including a provision of \$11,000 for a possible move to new premises.

Finance Committee

The Finance Committee consisted of Susan Anderson, Joanne Bozzuto, Ray Szymanski and Frank McConnell.

Committee Report

FUND RAISING:

The 2011 annual Gala fundraiser was a huge success and set a new record! Gross revenue was \$70,360.00 dollars. Net profit after expenses was \$55,174.00. Despite the challenging economic environment, we expect this year's revenue to be comparable to last year.

In February 2011 I co-hosted a fund raising dinner at my home with fellow board member Charles Consolvo to raise money for the restoration of the Garrison House, located on the southern end of Hassel Island. Charles gave a wonderful talk on Hassel Island and the role the Garrison house played in its maritime history. The guests loved the evening and gave generously. \$ 38,650.00 was raised and ear marked for the restoration of this historic treasure.

The trust secured a donation for Forth Willoughby from a private donor for \$10,000, to be used exclusively for restoration work of the fort. Another individual has pledged \$25,000, to be collected before the new calendar year, also ear marked for the Fort Willoughby account. This same individual has pledged an additional \$19,000, which will allow the trust to secure the lease assignment from the VI port authority to Cowell's battery. This will allow the Trust to lead tours up the southernmost hill to this historic signal station.

The community has been very generous this year in supporting the Trust in its mission of opening the Hassel Island National Park to visitors and residents to enjoy. The following is a list of major donors to the trust:

AH Riise, Bernard K. Passman Black Coral, Budget Rent a Car, Cardow, Charles and Jean Kim, Charles Consolvo, Cornelius and Trudie Prior, Diamonds International, Direct Data Capture, Donald Sussman, Drew Grabfelder and Shansi Miller, Elizabeth W. Anderson, First Bank, International Capital and Management, Isidor Paiewonsky & Associates, Jewels, Joanne Bozzuto, Judy and Adam Reeve, Little Switzerland, Premier Wines, Ricardo and Josefina Charaf, Scotiabank, Southland Gaming, Susan Anderson, The Daswani Family, The Paiewonsky Family, The West Indian Company Ltd., Tom and Chris Brunt, Trust Asset Management, Tunick Insurance, Windward Capital and Zack Zoeller.

Submitted by Filippo Cassinelli

Committee Reports

MEMBERSHIP:

COMMITTEE MEMBERS:

Lisa Chamely-Aqui
Charles W. Consolvo (Chairman)
Pamela Montegut (Ex-officio)

Thanks to the efforts of our Executive Director, Pamela Montegut, several volunteers, and work by the committee, we have grown from a dismal 42 paid members in April of 2010 when the committee was re-established to over 300 paid members. This growth has occurred through making contact with lapsed members, existing members encouraging friends and acquaintances to join, and speaking and tour engagements with local groups. The membership application and process have also been streamlined, and it is now possible to join through our web site.

Your committee would very much like to see each current member recruit one new member in the coming year, which will double our membership base and greatly assist in keeping our history alive.

Submitted by Charles Consolvo

MISSION DEVELOPMENT:

In the recent months, the Trust has had a wildly successful series of in-house lunchtime events that were well received by our membership. In August 2012, Kenneth Richards demonstrated Chair Caning. Also in August, Larise Joasil (a Trust intern), conducted a demonstration of Coal Pot Cooking. In September 2012, Justin Todman led a demonstration of Traditional West Indian Broom making. Each of these made the front page of the Daily News and were delivered to a full-house in the Trust museum. We look forward to continuing these events, which have touched a chord with our membership, and to introducing some new formatting to our lecture series. Stay tuned!

Submitted by Felipe Ayala

TASK FORCE REPORT



*Tombstone on
Hassel Island*

HASSEL ISLAND:

This has been an active year for Hassel Island. In November 2011, thanks to grants from the Vento Foundation, the National Park Foundation and two private donors, all of the trails joining the historic sites were opened for the first time in recent history. Over 100 people joined us for the grand opening. This event included the production of a trail map and brochure, which is available for sale at the Trust Museum, as well as the placement of park benches in strategic spots.

The major grant from the American Battlefield Protection Program for a detailed survey of Prince Frederik's Battery and an underwater survey of the "battlefield" area was completed. The Battery was the site of an engagement with a British man-of-war on March 3, 1801. For those members interested in reading the reports, which include a significant amount of historical information, send an email to consolvoc@att.net and you will be given access to an electronic copy. We are currently actively soliciting contributions for the stabilization and restoration of the Battery in accordance with the recommendations from the study, as well as for the stabilization of the Garrison House, both of which are now accessible via a dock generously repaired with a donation from the Virgin Islands Port Authority.

The Trust received an Urban Forestry Grant from the Virgin Islands Department of Agriculture for landscape planting of indigenous plant species at the Creque Marine Railway. Plant siting, clearing and composting have been completed and it is hoped that we will be installing the plants in late October. Volunteers from Rotary and EAST have made major contributions toward this achievement.

The grant to the Virgin Islands National Park by the Department of the Interior for the architectural documentation of the Napoleonic War era structures on Hassel Island has unfortunately been delayed, but hopefully will again be on track in the near future.

The Trust is actively pursuing the lease on the property known as Cowell's Battery and Signal Station, with the intent of stabilizing the structures and making them available to the public.

This fall, the VI National Park, with a grant from the National Park Foundation, and in cooperation with the Friends of the National Park and the Trust, is planning to

bring 500 students on tours of Hassel Island. Additional activities have included the Trust's partial funding through the Friends of the National Park of artifact cataloguing for Hassel Island. "Friends" has also funded a major restoration and preservation of much of the machinery associated with the Creque Marine Railway.

Most recently, as noted in the Daily News on September 17, 2012, Hassel Island was the beneficiary of the efforts of volunteers for the opening of Coast Week.

We hope you will take advantage of one of the hikes on Hassel Island announced periodically by the Trust, and come and explore this incredible collection of impressive historical sites. Also please consider volunteering your time, or making a contribution to the preservation of our wonderful heritage on Hassel Island. None of the above could have been accomplished without the selfless devotion and contributions from our members and the general public.

Submitted by Charles Consolvo – Chairman

PHOTOS FROM THE GRAND OPENING OF HASSEL ISLAND TRAILS



TASK FORCE REPORT

STEP STREETS:

With the support of My Brothers Workshop, the Trust took on a most ambitious project to clean, restore, and maintain the historic Step Streets of Charlotte Amalie. With additional support through a grant from the State Historic Preservation Office (SHPO), and additional monies from various donors, the Trust identified Bred Gade and Store Tvaer Strade as our first two step streets.



Of the two, Bred Gade, with its over 145 stone and ashlar-made steps is our biggest challenge. It connects with upper Long Path and is used by many residents of that neighborhood as a short cut to town. The steps are overgrown with weeds and vines, which surprisingly has helped to maintain them from further destruction. Once the weeds were removed, we were able to see that most of the stones and bricks needed to repair the edges were hidden under the grass. The students from My Brothers Workshop have been gathering those stones and learning the art of masonry to restore the steps.

The students also had the daunting task of cleaning more than 2000 used ballast bricks to repair the vaulting at the base of the stairs on Bred Gade. Each brick has to be painstakingly chipped and cleaned of any former residue before it can be reused in the new construction rehabilitation. This has taken awhile and affects the visible change to the actual steps even though the work has continued steadily.

Scott Bradley, Director of the program, has the young men working on the

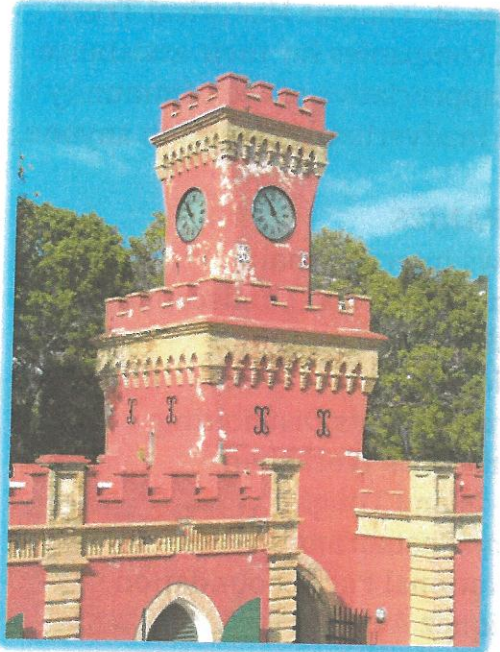
steps laying bricks every other week, and on the off weeks they work on cleaning the used bricks. Volunteers from the Church of Christ of Latter Day Saints, the Mormons have also volunteered. A group of men from that church have weeded and cut back the overgrown plants covering the steps.

This project has involved a wider cross section of the community, with businesses, Rotary, neighborhood residents and the Department of Public Works lending additional support. John Woods and his staff at Jaredian Design Group has given continued technical support in the restoration. The next two phases of the project will be to provide solar step lights and a handrail. The Trust is in the process of securing bids and developing the budgets for both.

Submitted by Felipe Ayala – Chairman

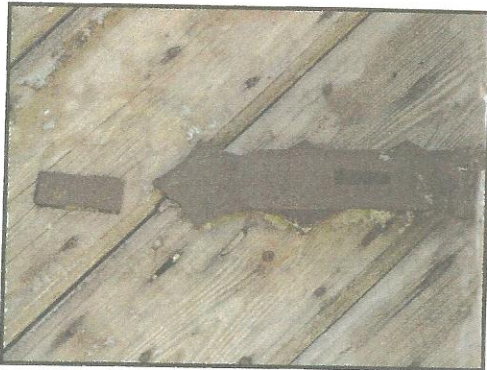


TASK FORCE REPORT



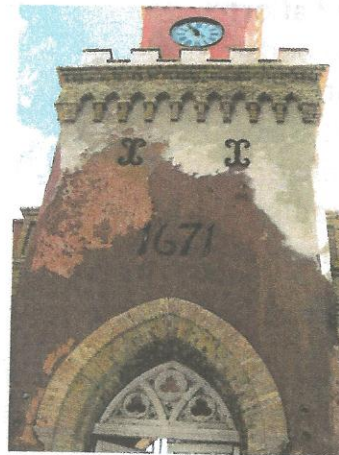
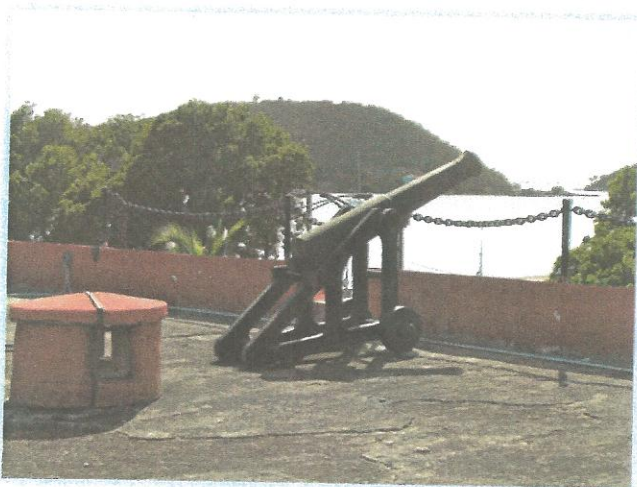
FT. CHRISTIAN:

As the newly elected chairman of the Fort Christian Rehabilitation project, I have worked closely with the prior chairman to come up to speed on the project. My plan is to make the Fort the centerpiece of our downtown area, so that it will be a major cultural destination for both residents and tourists. The biggest obstacle to this goal is getting the government to turn over full control to the STHT to manage and maintain the property. However, there already exists this type of arrangement in ST. Croix at the Whim Museum, and I plan to use that as a resource and guideline to accomplish my goal.



Unfortunately beyond the normal government issues, the Fort continues to be at the center of litigation that has made the process more difficult than it should be. By next year's STHT gala and annual meeting I will have a more detailed report.

Submitted by Shane Brunt



"THANK YOU!" TO OUR DONORS AND VOLUNTEERS

The Board of Directors and Management of the St. Thomas Historical Trust sincerely thank the following individuals and companies for their assistance throughout the past year. We remain deeply appreciative of the community's efforts and support, and apologize if we have inadvertently forgotten anyone.

INDIVIDUALS

Gov. John P. deJongh
Alan Wentworth
Alexis Colaire
Angela Jean Baptiste
Airall Fontaine
Barbara Petersen
Cathy O'Gara
Darryl Dodson
Fuller Campbell
I-Dahlia Babrow
John Woods
Justin Todman
Kenneth Richards
Kim Holdsworth
Larise Joasil
Lisa P. Williams
Marty Olson
McKim Collaire
Michael Campbell
Millie George
Notnu Ellison
Patricia LaCorte
Penny Woods
Philip Sturm
Rita Coll
Roy Anduze
Scott Bradley
Sean Krigger
Skip Williams
Stacy Loveland
Steve Russell
Summer Westman
Thomas Layer
Treston Moore

COMPANIES

Bellows International
Bryan's Plants and Landscaping
Island Business Graphics
Herbie's Big Top
Leeward Islands Distributing
My Brother's Workshop
MSI - Island Tough
Oceana Restaurant
The National Parks Foundation
Rodriquez Auto Parts
Scotiabank
SeaTow
The Vento Foundation
VI Council on the Arts
VI Dept. of Agriculture
VI Dept of Health
VI Dept. of Public Works
VI Historic Preservation Office
White Bay Group

**VOLUNTEERS & SUPPORTERS - THANK YOU.
YOU ARE THE ENGINE THAT KEEPS US MOVING FORWARD!**





Annual Report editorial compilation & photo credits: Lisa Chamely-Aqui
Annual Report copies courtesy Scotiabank

ST. THOMAS HISTORICAL TRUST

ANNUAL REPORT 2012

FINANCIAL STATEMENTS (ADDENDA):

BALANCE SHEET AS OF 30 SEPTEMBER 2012

PROFIT & LOSS 2012 VS. BUDGET

GENERAL FUND BUDGET 2013

HASSEL ISLAND BUDGET 2013

AUDITED FINANCIAL STATEMENTS 2011



10/03/12

St. Thomas Historical Trust, Inc.

Balance Sheet

As of September 30, 2012

Sep 30, 12**ASSETS****Current Assets****Checking/Savings****First Bank**

STHT-Hassel Island 164,635

First Bank - Other 647

Total First Bank 165,282

Merchant's Bank (Funds other than Hassel Island) 133,799

New Petty Cash Acct. 250

Petty Cash 33

Total Checking/Savings 299,364**Accounts Receivable**

Accounts Receivable 450

Total Accounts Receivable 450**Other Current Assets**

Paypal 291

Prepaid Expenses - GALA 9,350

Promises to give - Current 36,700

Undeposited Funds 7,031

Total Other Current Assets 53,372**Total Current Assets** 353,186**Fixed Assets**

Accumulated Depreciation -6,185

Equipment 9,437

Office Equipment 728

Signs 40

Total Fixed Assets 4,020**Other Assets**

Collectibles 30,290

Total Other Assets 30,290**TOTAL ASSETS** 387,496**LIABILITIES & EQUITY****Liabilities**

10/03/12

St. Thomas Historical Trust, Inc.

Balance Sheet

As of September 30, 2012

Sep 30, 12

Current Liabilities

Accounts Payable

Accounts Payable

6,994

Total Accounts Payable

6,994

Other Current Liabilities

Payroll Liabilities

1,036

Pre-paid Member Dues

1,250

Total Other Current Liabilities

2,286

Total Current Liabilities

9,280

Total Liabilities

9,280

Equity

Restricted Net assets

101,167

Retained Earnings

87,116

Unrestricted Net Assets

112,365

Net Income

77,566

Total Equity

378,214

TOTAL LIABILITIES & EQUITY

387,494

St. Thomas Historical Trust, Inc.
Profit & Loss Budget Performance
September 2012

	Preliminary		
	Fiscal Year 201	Budget 2012	Variance
Ordinary Income/Expense			
Income			
Donations			
General Fund Fundraiser	0.00	13,000.00	-13,000.00
In Kind Donations (In Kind Donations)	1,225.00	0.00	1,225.00
Museum Donation Box	361.00	600.00	-239.00
Donations - Other	3,113.72	6,000.00	-2,886.28
Total Donations	4,699.72	19,600.00	-14,900.28
Gala Income			
Ad Sales			
Ad Sales - Other	20,325.00	14,000.00	6,325.00
Total Ad Sales	20,325.00	14,000.00	6,325.00
Auction (Gala Auction)			
Tickets - Other	26,215.00	13,500.00	12,715.00
Total Tickets	23,820.00	23,000.00	820.00
Gala Income - Other	2,500.00	0.00	2,500.00
Total Gala Income	72,860.00	50,500.00	22,360.00
Hassel Island Admin Reimb	15,900.00	9,000.00	6,900.00
Interest Income	1,432.30	1,200.00	232.30
License Plates	8,106.00	5,004.00	3,102.00
Membership Dues			
Benefactor	2,100.00	500.00	1,600.00
Business	2,080.00	500.00	1,580.00
Contributor	1,550.00		1,550.00
Family	3,250.00	1,000.00	2,250.00
Individual	2,625.00	2,000.00	625.00
Lifetime	5,000.00	5,000.00	0.00
Patron	5,005.00	9,000.00	-3,995.00
Student	10.00	0.00	10.00
Total Membership Dues	21,620.00	18,000.00	3,620.00
Miscellaneous Income	225.00	0.00	225.00
Museum Store/Merchandise			
Calendars (Calendars)	2,772.00	5,000.00	-2,228.00
Walking Tour booklets (Walking Tour booklets)	822.00	1,704.00	-882.00
Museum Store/Merchandise - Other	694.00	1,000.00	-306.00
Total Museum Store/Merchandise	4,288.00	7,704.00	-3,416.00
Total Income	129,131.02	111,008.00	18,123.02
Cost of Goods Sold			
Calendars-Cost	1,164.00	2,000.00	-836.00
License Plates-Cost	1,986.55	1,000.00	986.55
Other Items Cost	0.00	1,000.00	-1,000.00
Total Cost of Goods Sold	3,150.55	4,000.00	-849.45
Total COGS	3,150.55	4,000.00	-849.45
Gross Profit	125,980.47	107,008.00	18,972.47
Expense			
Bank Service Charges			
Credit Card Fees	1,508.86	1,200.00	308.86
Bank Service Charges - Other	68.38	50.00	18.38
Total Bank Service Charges	1,577.24	1,250.00	327.24
Events			
Lecture	0.00	150.00	-150.00
Total Events	0.00	150.00	-150.00
Gala Expenses	15,432.47	16,000.00	-567.53
Insurance			
Directors & Officers Policy	1,614.62	1,500.00	114.62
Commercial General Liability	1,666.50	1,700.00	-33.50
Total Insurance	3,281.12	3,200.00	81.12
Licenses and Permits	150.00	0.00	150.00
Marketing Expense			
Advertising	0.00	500.00	-500.00
Marketing Expense - Other	2,182.84	1,500.00	682.84
Total Marketing Expense	2,182.84	2,000.00	182.84
Meetings			
Annual Meeting	400.00		400.00
Board Meetings	29.35	240.00	-210.65
Meetings - Other	14.38	750.00	-735.62
Total Meetings	443.73	990.00	-546.27
Miscellaneous	0.00		0.00
Museum	(10.00)		-10.00
Newletter	0.00	1,350.00	-1,350.00
Office Supplies	1,235.65	1,500.00	-264.35
Payroll Expenses			
Health Insurance	2,695.00	4,900.00	-2,205.00
Salary	50,000.08	50,000.00	0.08
VIESA	389.79	300.00	89.79
Workman's Compensation	109.51	150.00	-40.49
Payroll Expenses - Other	3,860.51		3,860.51
Total Payroll Expenses	57,054.89	55,350.00	1,704.89
Postage and Delivery	1,239.54	1,000.00	239.54

St. Thomas Historical Trust, Inc.
 Profit & Loss Budget Performance
 September 2012

	Preliminary		
	Fiscal Year 201	Budget 2012	Variance
Premises			
Building Repairs	3,194.00	2,900.00	294.00
Casual Labor	0.00	400.00	-400.00
Computer Repairs	0.00	250.00	-250.00
Equipment Repairs	0.00	500.00	-500.00
Janitorial Services	1,100.00	1,280.00	-180.00
Landscaping	0.00	100.00	-100.00
Repairs & Maintenance	285.61	11,000.00	-10,714.39
Security	3,474.00	600.00	2,874.00
Premises - Other	0.00	750.00	-750.00
Total Premises	8,053.61	17,780.00	-9,726.39
Printing and Reproduction	3,877.25	450.00	3,427.25
Professional Fees			
Accounting	10,893.10	4,700.00	6,193.10
Audit	6,950.00	5,500.00	1,450.00
Professional Fees - Other	440.00	0.00	440.00
Total Professional Fees	18,283.10	10,200.00	8,083.10
Travel & Ent			
Entertainment	1,400.00	0.00	1,400.00
Total Travel & Ent	1,400.00	0.00	1,400.00
Utilities			
Gas, Electric & Water	1,951.74	4,500.00	-2,548.26
Telephone	970.33	1,100.00	-129.67
Total Utilities	2,922.07	5,600.00	-2,677.93
Total Expense	117,123.51	127,820.00	0.00
Net Ordinary Income	8,856.96	(20,812.00)	25,668.96
Net Income excluding Hassel Is., Step Streets and 2012 Gala	8,856.96	(20,812.00)	25,668.96

GENERAL FUND BUDGET 2013

	<u>2013 Budget</u>
Ordinary Income/Expense	
Income	
Donations	
In Kind Donations (In Kind Donations)	0.00
Museum Donation Box	400.00
Donations - Other	4,800.00
Total Donations	<u>5,200.00</u>
Historic Walking Tours	3,500.00
Gala Income	
Ad Sales	20,000.00
Auction (Gala Auction)	30,000.00
Tickets	29,400.00
Total Gala Income	<u>79,400.00</u>
Grants (Grants)	10,000.00
Hassel Island Admin Reimb	10,000.00
Interest Income	1,200.00
License Plates	6,000.00
Membership Dues	
Benefactor	2,000.00
Business	2,000.00
Contributor	3,500.00
Family	0.00
Individual	2,500.00
Lifetime	5,000.00
Patron	5,000.00
Student	100.00
Total Membership Dues	<u>20,100.00</u>
Monthly Museum Events	
Donation from Lecture Series	5,000.00
Total Museum Event Donations	<u>5,000.00</u>
Museum Store/Merchandise	
Calendars (Calendars)	3,000.00
Walking Tour booklets (Walking Tour booklets)	1,500.00
Coaling Tokens	180.00
Note Cards	1,500.00
Museum Store/Merchandise - Other	100.00
Total Museum Store/Merchandise	<u>6,280.00</u>
Total Income	146,680.00
Cost of Goods Sold	
Cost of Goods Sold	
Calendars-Cost	1,000.00
Note Cards	500.00
License Plates-Cost	1,500.00
Total Cost of Goods Sold	<u>3,000.00</u>
Total COGS	<u>3,000.00</u>
GROSS PROFIT	<u>143,680.00</u>
EXPENSE	
Bank Service Charges	
Credit Card Fees	700.00
Bank Service Charges - Other	100.00
Total Bank Service Charges	<u>800.00</u>
Events	
Lecture	2,500.00
Total Events	<u>2,500.00</u>
Gala Expenses	21,000.00
Insurance	
Directors & Officers Policy	1,700.00
Liability Insurance	1,700.00
Walking Tour Insurance	2,000.00
Total Insurance	<u>5,400.00</u>
Marketing Expense	
Advertising	500.00

St. Thomas Historical Trust, Inc.

~~Financial Statement Performance~~

GENERAL FUND BUDGET 2013

	<u>2013 Budget</u>
Membership Activities	1,500.00
Total Marketing Expense	<u>2,000.00</u>
Meetings	
Annual Meeting	400.00
Board Meetings	0.00
Meetings - Other	100.00
Total Meetings	<u>500.00</u>
Museum	900.00
Newsletter	1,500.00
Office Supplies	1,500.00
Payroll Expenses	
Health Insurance	2,500.00
Salary	52,500.00
VIESA	300.00
Workman's Compensation	150.00
Payroll Expenses - Other	4,000.00
Total Payroll Expenses	<u>59,450.00</u>
Postage and Delivery	1,200.00
Premises	
Building Repairs	3,300.00
Casual Labor	250.00
Computer Repairs	300.00
Equipment Repairs	500.00
Janitorial Services	300.00
Landscaping	250.00
Repairs & Maintenance	11,000.00
Security	600.00
Premises - Other	750.00
Total Premises	<u>17,250.00</u>
Printing and Reproduction	600.00
Professional Fees	
Accounting	7,500.00
Audit	7,000.00
Website	2,500.00
Total Professional Fees	<u>17,000.00</u>
Travel & Ent	
Entertainment (Entertainment)	250.00
Total Travel & Ent	<u>250.00</u>
Utilities	
Gas, Electric & Water	1,800.00
Telephone	1,070.00
Total Utilities	<u>2,870.00</u>
Total Expense	134,720.00
Net Ordinary Income	8,960.00
Net Income before Step Streets	<u>8,960.00</u>
Step Streets	
Step Street Grant	5,000.00
Expense	20,000.00
Step Streets Net	<u>-15,000.00</u>
Net Income excluding Hassel Is.	<u>-6,040.00</u>

PROPOSED BUDGET, HASSEL ISLAND TASK FORCE
 FY 2013

PROJECT	EST. COST	ON HAND	DONATIONS
PRINCE FREDERIK'S BATTERY	\$80,000	\$10,000	\$70,000
GARRISON HOUSE	\$110,000	\$38,500	\$71,500
TRAIL MAINTENANCE	\$10,000	\$8,000	\$2,000
LIME KILN	\$60,000	\$0	\$60,000
COWELL'S BATTERY/SIGNAL STATION	\$50,000	\$18,000	\$32,000
PRIOR DVD FUNDS	\$9,000	\$9,000	\$0
URBAN FORESTRY GRANT	\$17,700	\$2,700	\$15,000 See below
	\$336,700	\$86,200	\$250,500
BALANCE OF HASSEL ISLAND FUND, UNRESTRICTED, CAN BE APPLIED TO DONATIONS			\$75,000
BALANCE NEW DONATIONS			\$175,500

ALSO EXPECT SOME TOUR INCOME BUT AMOUNTS
 CAN NOT YET BE DETERMINED.

URBAN FORESTRY GRANT COMMITTED DONATIONS	
Dept. Of Agriculture	5000
STHT General Fund	2000
In-Kind	8000
TOTAL	\$15,000

St. Thomas Historical Trust, Inc.

FINANCIAL STATEMENTS

September 30, 2011 and 2010

Larry E. Kemp, C.P.A., P.C.
St. Thomas, US Virgin Islands

St. Thomas Historical Trust, Inc.
INDEX
September 30, 2011 and 2010

	PAGE
Independent Auditor's Report	3
Financial Statements:	
Statements of Financial Position	4
Statements of Activities - 2011 and 2010	5
Statement of Activities - 2010	6
Statements of Functional Expenses - 2011 and 2010	7
Statement of Functional Expenses - 2010	8
Statements of Cash Flows	9
Notes to Financial Statements	10-12

LARRY E. KEMP, C.P.A., P.C.
CERTIFIED PUBLIC ACCOUNTANT
6501 RED HOOK PLAZA #201
ST. THOMAS, VI 00802
Phone (340) 775-9887

INDEPENDENT AUDITOR'S REPORT

Board of Directors
St. Thomas Historical Trust, Inc.

I have audited the accompanying statements of financial position of St. Thomas Historical Trust, Inc. (a nonprofit organization) as of September 30, 2011 and 2010, and the related statements of activities, functional expenses and cash flows for the years then ended. These financial statements are the responsibility of the Organization's management. My responsibility is to express an opinion on these financial statements based on my audits.

I conducted my audits in accordance with auditing standards generally accepted in the United States of America. Those standards require that I plan and perform the audit to obtain reasonable assurance about whether the financial statements are free of material misstatement. An audit includes examining, on a test basis, evidence supporting the amounts and disclosures in the financial statements. An audit also includes assessing the accounting principles used and the significant estimates made by management, as well as evaluating the overall financial statement presentation. I believe that my audits provide a reasonable basis for my opinion.

In my opinion, the financial statements referred to above present fairly, in all material respects, the financial position of St. Thomas Historical Trust, Inc. as of September 30, 2011 and 2010 and the changes in its net assets and its cash flows for the years then ended in conformity with accounting principles generally accepted in the United States of America.



Larry E. Kemp, C.P.A., P.C.
US Virgin Islands
May 21, 2012

St. Thomas Historical Trust, Inc.
 Statements of Financial Position
 September 30, 2011 and 2010

ASSETS	<u>2011</u>	<u>2010</u>
Cash	\$ 264,489	\$ 134,303
Grants receivable	22,915	0
Unconditional promises to give	36,700	65,600
Prepaid expenses - GALA	6,136	6,825
Prepaid expenses - other	<u>2,695</u>	<u>719</u>
Total current assets	332,935	207,447
Furniture and equipment		
Furniture and equipment	<u>10,005</u>	<u>5,815</u>
	10,005	5,815
Less accumulated depreciation	<u>6,185</u>	<u>4,632</u>
	3,820	1,183
Collectibles	<u>30,290</u>	<u>33,115</u>
Total assets	<u>\$ 367,045</u>	<u>\$ 241,745</u>
LIABILITIES AND NET ASSETS		
Accrued expenses and liabilities	\$ 37,908	\$ 4,262
Deferred income - GALA	<u>28,980</u>	<u>14,140</u>
Total current liabilities	<u>66,888</u>	<u>18,402</u>
Net assets		
Unrestricted	129,185	128,386
Temporarily restricted	<u>170,972</u>	<u>94,957</u>
	300,157	223,343
Total liabilities and net assets	<u>\$ 367,045</u>	<u>\$ 241,745</u>

The accompanying notes are an integral part of these financial statements.

St. Thomas Historical Trust, Inc.
 Statements of Activities
 Years ended September 30, 2011 and 2010

	2011			2010 Total
	Unrestricted	Temporarily Restricted	Total	
Revenues				
Contributions				
Contribution - in kind	\$ 28,385	\$ 86,763	\$ 115,148	\$ 22,840
Contribution - collectibles	34,119	0	34,119	31,040
Grants	175	0	175	16,815
GALA income	0	84,467	84,467	0
Memberships	58,054	0	58,054	42,470
License plates	13,189	0	13,189	11,150
Interest	5,864	0	5,864	5,946
Other	1,608	0	1,608	897
	1,257	0	1,257	140
Net assets released from restrictions:				
Satisfaction of donor/grantor requirements	95,215	(95,215)	0	0
Total revenues	<u>237,866</u>	<u>76,015</u>	<u>313,881</u>	<u>131,298</u>
Functional Expenses				
Program services	173,722	0	173,722	64,811
Management and general	46,244	0	46,244	32,650
Fundraising expenses	17,101	0	17,101	24,026
Total expenses	<u>237,067</u>	<u>0</u>	<u>237,067</u>	<u>121,487</u>
Increase in net assets	799	76,015	76,814	9,811
Net assets - beginning	<u>128,386</u>	<u>94,957</u>	<u>223,343</u>	<u>213,532</u>
Net assets - ending	<u>\$ 129,185</u>	<u>\$ 170,972</u>	<u>\$ 300,157</u>	<u>223,343</u>

The accompanying notes are an integral part of these financial statements.

St. Thomas Historical Trust, Inc.
Statement of Activities
Year ended September 30, 2010

	2010		
	Unrestricted	Temporarily Restricted	Total
Revenues			
Contributions	\$ 140	\$ 22,700	\$ 22,840
Contribution - in kind	31,040	0	31,040
Contribution - collectibles	16,815	0	16,815
GALA income	42,470	0	42,470
Memberships	11,150	0	11,150
License plates	5,946	0	5,946
Interest	897	0	897
Other	140	0	140
Net assets released from restrictions:			
Satisfaction of donor requirements	28,910	(28,910)	0
Total revenues	<u>137,508</u>	<u>(6,210)</u>	<u>131,298</u>
Functional Expenses			
Program services	64,811	0	64,811
Management and general	32,650	0	32,650
Fundraising expenses	24,026	0	24,026
Total expenses	<u>121,487</u>	<u>0</u>	<u>121,487</u>
Increase (decrease) in net assets	16,021	(6,210)	9,811
Net assets - beginning	<u>112,365</u>	<u>101,167</u>	<u>213,532</u>
Net assets - ending	<u>\$ 128,386</u>	<u>\$ 94,957</u>	<u>\$ 223,343</u>

The accompanying notes are an integral part of these financial statements.

St. Thomas Historical Trust, Inc.
 Statements of Functional Expenses
 Years ended September 30, 2011 and 2010

	2011				2010 Total
	Program Services	General and Administrative	Fundraising	Total	
Credit card fees	\$ 0	\$ 968	\$ 449	\$ 1,417	\$ 0
Depreciation	1,165	388	0	1,553	858
Gala Expenses	0	0	15,500	15,500	16,448
Hassel Island expenses	88,928	0	0	88,928	2,866
Hassel Island expenses - contribution of equipment	0	0	0	0	26,044
Health insurance	3,233	1,078	0	4,311	718
Insurance	0	3,133	0	3,133	3,061
License plates	0	0	1,152	1,152	1,618
Marketing and advertising	1,566	1,566	0	3,132	1,760
Miscellaneous	1,197	417	0	1,614	161
Office expense	1,089	363	0	1,452	1,816
Payroll taxes and related	2,979	993	0	3,972	1,170
Postage and delivery	680	227	0	907	314
Professional fees	0	17,208	0	17,208	16,911
Program - other	3,177	0	0	3,177	0
Repairs	2,865	955	0	3,820	2,127
Salaries	33,606	11,202	0	44,808	11,538
Security	1,380	460	0	1,840	0
Telephone	814	271	0	1,085	1,977
Utilities	2,954	985	0	3,939	1,060
In kind expenses					
Rent	18,000	6,000	0	24,000	24,000
Services	10,000	0	0	10,000	0
Other	89	30	0	119	7,040
	<u>\$ 173,722</u>	<u>\$ 46,244</u>	<u>\$ 17,101</u>	<u>\$ 237,067</u>	<u>\$ 121,487</u>

The accompanying notes are an integral part of these financial statements.

St. Thomas Historical Trust, Inc.
 Statements of Cash Flows
 Years ended September 30, 2011 and 2010

	2011	2010
Cash flows from operating activities		
Increase in net assets	\$ 76,814	\$ 9,811
Adjustments to reconcile increase in net assets to net cash provided by operating activities		
Depreciation	1,553	858
Collectibles reverted to on loan status	3,000	0
Contributions - collectibles	(175)	(16,815)
Changes in assets and liabilities affecting cash flows from operating activities		
Grants receivable	(22,915)	0
Unconditional promises to give	28,900	32,300
Prepaid expenses	(1,287)	(373)
Deferred income	14,840	2,645
Accrued expenses and liabilities	33,646	4,262
Net cash provided by operating activities	134,376	32,688
Cash flows from investing activities		
Purchase of fixed assets	(4,190)	(399)
Net cash used by investing activities	(4,190)	(399)
Net increase in cash	130,186	32,289
Cash, beginning of year	134,303	102,014
Cash, ending of year	\$ 264,489	\$ 134,303
Supplemental disclosures:		
Income tax paid	\$ 0	\$ 0
Interest paid	\$ 0	\$ 0

The accompanying notes are an integral part of these financial statements.

St. Thomas Historical Trust, Inc.
Notes to Financial Statements
September 30, 2011 and 2010

Note 1 - Nature of Operations and Summary of Significant Accounting Policies

St. Thomas Historical Trust, Inc. (STHT) is a nonprofit organization incorporated in the U.S. Virgin Islands. The Organization's mission is to identify, protect and preserve the historical identity, structure and sites, and cultural heritage of St. Thomas through education, advocacy and promotion.

A summary of significant accounting policies consistently applied in the preparation of the accompanying financial statements follows:

Basis of presentation - The Organization maintains its accounts on an accrual basis.

Unconditional promises to give - The Organization records unconditional promises to give as a receivable when the promise is made. An allowance for uncollectible promises is recorded based on an estimate made by management.

Property, furniture and equipment - Property, furniture and equipment is stated at cost or estimated value at time of contribution. Depreciation is calculated using the straight line and declining balance methods over the estimated useful lives of the assets.

Collectibles - Collectibles are stated at cost or estimated value at time of contribution.

Income Taxes - The Organization is exempt from income taxes under Section 501(c)(3) of the Internal Revenue Code.

Financial Statement Presentation - The Organization reports information regarding its financial position and activities according to three classes of net assets: unrestricted, temporarily restricted, and permanently restricted.

Contributions - Contributions received are recorded as unrestricted, temporarily restricted or permanently restricted depending on the existence or nature of any donor restrictions. When a donor restriction expires, that is when a stipulated time restriction ends or purpose restriction is accomplished, temporarily restricted net assets are reclassified to unrestricted net assets and reported in the statement of activity as net assets released from restrictions.

In-Kind Contributions - In-kind contributions meeting the criteria for recognition in the financial statements are recorded at fair value.

Grants - Grant income is recorded in the period earned. Expenditures chargeable to grants are recorded in the period incurred.

Allocated Expenses - Certain expenses by function have been allocated among program and supporting services classifications on the basis of estimates made by the Organization's management.

Estimates - The preparation of financial statements in conformity with generally accepted accounting principles requires management to make estimates and assumptions that affect certain reported amounts and disclosures. Accordingly, actual results could differ from those estimates.

St. Thomas Historical Trust, Inc.
Notes to Financial Statements
September 30, 2011 and 2010

Note 2 - Unconditional Promises to Give

During 2007, the Organization initiated a fundraising effort to raise funds for the preservation, protection and enjoyment of Hassel Island, Virgin Islands (see notes 3, 4 and 5). Unconditional promises to give totaling \$245,300 were made to the Organization in 2007.

At September 30, 2011, the unconditional promises to give are as follows:

Due in 2012	
Less: discount to present value	\$64,500
Less: allowance for uncollectible amounts	(2,800)
	<u>(25,000)</u>
Net unconditional promises to give	<u>\$36,700</u>

A discount rate of 4% was used to record the present value of unconditional promises to give due in more than one year at the time the unconditional promise is recorded.

The net unconditional promises to give are reflected in temporarily restricted net assets at September 30, 2011 and 2010.

Note 3 - Temporarily Restricted Net Assets

Temporarily restricted net assets at September 30, 2011 and 2010 consist of contributions and grants restricted for the preservation, protection and enjoyment of Hassel Island, Virgin Islands (see note 4). The funds are comprised of cash, unconditional promises and grants receivable to give and grants receivable at September 30, 2011 and 2010.

Note 4 - National Park Service/ Hassel Island

Memorandum of Understanding

In July, 2006, the Organization entered into an agreement with the United States Department of Interior - National Park Service / Virgin Island National Park (the Park) to provide funding, supporting and/or implementing projects and activities that further offer protection of natural resources; creating awareness for the preservation of the cultural resources and enhancement of environmental awareness; promoting volunteer and community involvement on Hassel Island and advocating for potential uses and advancing the best interests of Hassel Island before government and the general public.

Grant Agreements

In August, 2010, the Organization entered into a grant agreement with the United States Department of Interior - National Park Service (NPS) which provides funding of \$44,500 under the American Battlefield Protection Program. The funding will be provided on a reimbursement basis for expenditures. For the fiscal year ended September 30, 2011, expenditures reimbursable under the grant were incurred of \$33,717 which is included in grant income and Hassel Island expenses. Amounts due from the NPS at September 30, 2011 related to this grant is \$22,915. The balance of the grant will be expended in fiscal 2012.

St. Thomas Historical Trust, Inc.
Notes to Financial Statements
September 30, 2011 and 2010

Note 4 - National Park Service/ Hassel Island - continued

In May, 2011, the Organization entered into an agreement with the Virgin Island National Park and the National Park Foundation (the Foundation) which provides a grant to the Park of \$20,000 under the Active Trails Program. Under the agreement, the Organization has agreed to be fiscal manager of the Active Trails Program. The entire grant of \$20,000 was received in 2011 and is included as grant income. Contributions to the Active Trails Program of \$6,000 were received in 2011 and are included in temporarily restricted contributions. Expenditures for the Active Trails Program of \$5,891 were made during 2011 and are reflected in Hassel Island expenses.

In August 2011, the Organization received a grant of \$25,000 from a local charitable trust to be used for Hassel Island trail projects. The entire grant is included in grant income for 2011. No expenditures were charged against the grant in 2011.

In Kind Services

During 2011, A BOD member acted as grant coordinator and performed other services for Hassel Island projects. The BOD member was not paid for these services and an in kind contribution of \$10,000 has been recorded for 2011.

Contribution of Equipment

In December 2009, the Organization donated certain construction equipment to the National Park Service / Virgin Island National Park to be used clear and maintain Hassel Island. The cost of the equipment was \$26,044 and is reflected as a contribution expense in 2010.

Note 5 - Office Space

During the years ended September 30, 2011 and 2010, the Organization received office and museum space at no charge. The current agreement was effective May 1, 2009 for a period of one year and shall continue on a month to month basis unless terminated. The Organization has estimated the fair value of the space provided under the agreement as \$2,000 per month and has recorded in-kind contributions of \$24,000 for 2011 and 2010.

Note 6 - Concentrations

The Organization maintains an account with a local bank. Account balances in this institution are currently insured up to \$250,000 by the federal deposit insurance corporation (FDIC). The uninsured balance in the account at September 30, 2011 was approximately \$13,000.

Note 7 - Date of Management's Review

In preparing the financial statements, management has evaluated subsequent events and transactions for potential recognition or disclosure through May 21, 2012, the date on which the financial statements were available to be issued.